

RESIDENTIAL
& COMMERCIAL

INDUSTRIAL
& MARINE

ART
& CRAFT

SHIMICOAT
SURFACE SOLUTIONS



RESIN AGGREGATE

*Australia's Natural Colours
Permeable Resin Aggregate*

Kit Sizes

1sqm Kit Contains

Product Description	Size	Code	Quantity
Ultra Clear Polyaspartic	1Lt	PA	1
Aggregate	20Kg	AG	1

5sqm Kit Contains

Product Description	Size	Code	Quantity
Ultra Clear Polyaspartic	4Lt	PA	1
Aggregate	20Kg	AG	3
EpoDil	0.5Lt	ED	1



15sqm Kit Contains

Product Description	Size	Code	Quantity
Ultra Clear Polyaspartic	8Lt	PA	1
Aggregate	20Kg	AG	8
EpoDil	1Lt	ED	1



40sqm Kit Contains

Product Description	Size	Code	Quantity
Ultra Clear Polyaspartic	20Lt	PA	1
Aggregate	20Kg	AG	20
EpoDil	1Lt	ED	1

60sqm Kit Contains

Product Description	Size	Code	Quantity
Ultra Clear Polyaspartic	20Lt	PA	1
Ultra Clear Polyaspartic	10Lt	PA	1
Aggregate	20Kg	AG	32
EpoDil	1Lt	ED	4

 MATERIALS  CHEMICALS  RESINS  EQUIPMENT

Ph: (08) 9364 7446 | info@shimi.com.au | ABN: 28 622 871 283 | www.shimi.com.au

90sqm Kit Contains

Product Description	Size	Code	Quantity
Ultra Clear Polyaspartic	40Lt	PA	1
Aggregate	20Kg	AG	48
EpoDil	4Lt	ED	1

Aggregate Consumption:

Depending on the thickness of your finish surface, your usage may vary.

Indent Product / 4 weeks lead-time

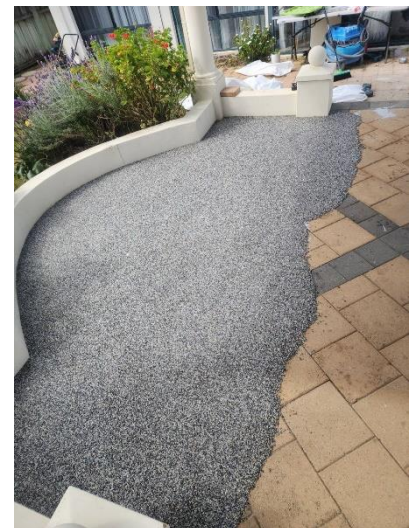
Description

SHIMICOAT Resin Aggregate is a decorative, durable, permeable aggregate-filled floor finishing system. This is a complete system which includes resin primer, Australian Natural Colours pebble rock aggregate, special binder and a UV stable protective clear topcoat. It provides a slip and high impact resistant surface with exceptional strength and wear characteristics. The flooring system has the ability to install over concrete or any solid substrates. Available in a variety of aggregate colors or your custom blend to match any decor.

SHIMICOAT Resin Aggregate is a two-component, low VOC, low odor, 100% solid resin binder. Vibrant resin matrix that's flexible and in many colours. It is an extremely durable seamless finish that has excellent resistance to abrasion and common chemicals.

SHIMICOAT Resin Aggregate offers a strong rigid water permeable aggregate system. Similar to exposed aggregate concrete, yet much stronger, smoother and permeable available in a wide range of colours to suit all decors.

SHIMICOAT Resin Aggregate is the ideal choice to provide extreme durability and ease of maintenance in heavy traffic commercial and institutional areas such as residential, commercial, industrial and marines, hospitals, pharmaceutical research centres, schools, banks, building lobbies, shopping centres, grocery stores, airport terminals, train stations, convention and entertainment centres.



SHIMICOAT Resin Aggregate floor finishing system is a blend of proprietary resin, pebble and stones representing Australian Natural Colours. When you mix the two, the result creates a stunning driveway, pool deck, sidewalk, patio, sunroom, porch and many outdoor surfaces that last decades as new. This system can be used virtually anywhere. If incorporated with a water proofing membrane, you can even create a seamless deck surface.

SHIMICOAT Pebble-Stone Epoxy System is stain, salt, and chemical resistant. Every stone is imbedded in our high performance resin. The finish surface is ideally suitable for pool decks because water permeates and will not puddle resulting in safer and better look floor.

SHIMICOAT Australian Natural Colour stones are smooth to walk on with pleasant appearance of Australian beautiful outback resemblance. We have extensive surface preparation techniques and have created incredible innovative advancements that continue to exceed industry standards.



SHIMICOAT Resin Aggregate System is the “Diamond Standard” and the most permanent, set-in-stone solution to stained, pitted, cracked, and ugly concrete, without the hassle of demolition/removal and tearing it out.

GREAT FOR:

- Driveways
- Pool Surrounds
- Walkways
- Patios & Alfresco
- Sunrooms
- Garages
- Porches
- Commercial Floors
- Industrial Surfaces
- Marine Decks
- Over existing concrete
- Bitumen

Features

- Australian’s Natural Colours
- Rock Solid Floor
- Custom Designs
- Engineered high-strength
- Stronger than Concrete Aggregate
- Stain Resistant
- Salt Resistant
- Chemical Resistant
- Permeable Finish Surface
- Good weather resistance
- Friction resistance
- Compression resistance
- Hardwearing finish surface
- Ideal for outdoor surfaces
- Weatherproof
- Economical

Colour Chart

Resin: Crystal Clear Liquid A / Crystal Clear Liquid B

Pebble Stones are in 18 vibrant colours, some are presented below:



Coverage

0.5-1Lt of Resin and a 20Kg bag of pebble stone to cover up to 2sqm flat surface (6mm).
Consumption may vary depending on the thickness of your finish surface.

Applications

Mix – Trowel / Screed – Level

You can use compactor for larger areas to level flat and progress fast.

Dry Time at 25°C

Depending on temperature and humidity curing time may vary.

Attributes	Polyaspartic	Epoxy	UVthane
Touch Dry	2-3 Hours	8-16Hours	8-16Hours
Initially Curing	4 Hours	16 Hours	16 Hours
Re-Application	6 Hours	Over Night	Over Night
Fully Cured	16 Hours	7 Days	7 Days
Foot Traffic	6 Hours	Next Day	Next Day
Heavy Traffic	Seven Days	Seven Days	Seven Days

Clean Up

Clean-Up with Xylene or EpoDil

Preparations

Clean and dry surface. Ensure surface to be coated is free of all dirt, grease, oil, paint, curing agents and other contaminants. Removal of Oil Contamination by degreaser and alkaline cleaning pressure wash
Acid-wash to enhanced surface porosity and etch the surface

Ensure moisture free surface. Allow to completely dry, run Dry Test. Place a piece of plastic over a small area, tape the edges and leave for 1 hour. Remove plastic, if there is no moisture on either surface, concrete is sufficiently dry.

Ideally, always consider surface grinding and removal of loose materials. Grinding is always advisable prior to application of all Shimicoat Epoxy products, to maximize adhesion.

For further information, please refer to SHIMICOAT Instruction for "Surface Preparations".

Specifications of Resin Aggregates

SHIMICOAT offers three types of resin for various surfaces:

PROPERTIES	Polyaspartic	Epoxy	Polyurethane
Curing	Fast - 4 Hours	Slow - 12 Hours	Slow - 12 Hours
Mix Ratio	1A:1B	2A:1B	3A:1B
UV Resistant	HIGH Stability "Non-Yellowing"	LOW Stability "Yellowing Over Time"	LOW Stability "Yellowing Over Time"
Outdoor Suitability	Ideally Suitable	Not Suitable Under Sun	Not Suitable Under Sun

Physical Properties of Ultra Clear Polyaspartic 1A:1B

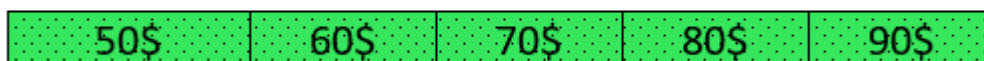
Mix Ratios	1A:1B (Volume or Weight)
Appearance	Twin Pack Crystal Clear Low Viscosity liquid
Solid Content (%)	>95% Ultra Clear Polyaspartic Polymer
Viscosity, Brookfield at 25 °C (cP)	100 – 250 – LOW
Amine content (mg KOH/g)	164 - 178
Amine hydrogen equivalent weight, (g/mol)	326
Density, at 20 °C	A: 1.01 / B: 1.05
Color (Gardner)	A: 1 – 2 / B: ≤ 1
Flash point (°C)	>74 °C
Solvent Content / VOC	Nil
Relative Density (Water=1.00)	1.0
Pot Life (Min)	20min
Thinning, Dilution Chemicals	Xylene, EpoDil or AcryDil – Up to 5% Vol
Solubility	Miscible in Water – Soluble in Hydrocarbon Xylene
Application Conditions (Temp °C)	10 – 30 °C
Coverage Rate	Coating: 5-10 sqm/L/Coat, Needs One Coat Aggregate: 1Lt in 20Kg Aggregate /sqm



Cost Estimate based on 100sqm Standard Driveway:



Cost of Materials



Cost of Installation

Physical Properties of Ultra Clear Epoxy 2A:1B

Mix Ratios	2A:1B (Volume) or 2A:1B (Weight) <i>For Example: 2Lt of A (2Kg) & 1Lt of B (1Kg)</i>
Pot Life @25°C	45min
Colour of Blend	Available in All Australian Standard AS 2700 Colours
Specific Gravity (SG) of Blend	1.4
Low Profile Coverage (Kg/sqm)	Roller Application (200micron) - 0.2Kg of Blend per sqm
Maximum Temperature Surface Exposure (°C)	140
Initial Cure Time (Hours)	24Hours
Ultimate Cure Time (Days)	7 Days
Compressive strength (ASTM D 695-85)	80-90
Tensile strength (ASTM D 638-86)	50
Flexural strength (ASTM D 790-86)	80-90
Hardness shore D (ASTM D2240-86)	81
Abrasion Resistance (ASTM D4060-90)	0.056 g/1000 cycle

Physical Properties of UVthane PLUS 3A:1B

Mix Ratios	3.6A:1B (Volume) or 4A:1B (Weight) <i>For Example: 3.6Lt of A (4Kg) & 1Lt of B (1Kg)</i>
Appearance	Twin Pack Crystal Clear Low Viscosity liquid
Solid Content (%)	>90% Polyurethane Polymer
Relative Density (Water=1.00)	1.1
Pot Life (Min)	45min
Thinning, Dilution Chemicals	Xylene, EpoDil or AcryDil – Up to 10% Vol
Solubility	Miscible in Water – Soluble in Hydrocarbon Xylene
Application Conditions (Temp °C)	10 – 30 °C
Coverage Rate	5-10 sqm/L/Coat, Needs Two Coats

Direction

Ideally 1.5Lt, or mix 1-2Lt of the resin according to the label mix ratios and below table. Load one bag (20Kg) of pebble stone and mix using drill mixer or cement tumble mixer for 2-3 min. Dump onto the surface followed by screeding and trowelling level.

Table 1: Types of resins used for Pebble Stone floor finishing system.

Application	Recommended Resin	Mix Ratio	Resin Volume	Pebble Stone Qty
Under Direct Sun	PolyAspartic	1:1	1Lt of A / 1Lt of B	1 Bag = 20Kg
Undercover – No Sun	Epoxy	2:1	1Lt of A / 0.5Lt of B	1 Bag = 20Kg
Undercover – No Sun	Polyurethane / UVthane	3:1	1.5Lt of A / 0.5Lt of B	1 Bag = 20Kg

Each bag covers up to 3sqm

Application Details:

Surfaces must be dry, clean, sound and frost-free, with contaminants detrimental to bond removed.

Remove any dust, laitance, oil, dirt, wax, foreign matter, coatings, loose, flaked and disintegrated material from the surface by any appropriate mechanical means such as sanding or grinding.

Warning:

- Please consult MSDS of the product prior to use.
- Do Not Apply if rain is expected within 24 hours, when applying outdoor
- Surface Prep is crucial to ensure strong bonding. Follow SHIMICOAT Surface Prep instruction.
- DO NOT apply over existing low-quality sealers or coating materials without removal and surface prep.
- Minimum/Maximum substrate temperature: 15°C to 30°C (60°F / 85°F).
- High temperature and high humidity will reduce pot life and accelerate curing.
- Maximum ambient relative humidity: 85%.
- Calculate coverage rate of 3-4m² per bag of pebble stone.
- Pot Life of the product is 20-45 minutes depending on type of resin used and the temperature, get the product out of the mixing bucket/tumble mixer and *on the floor* within 20min or less, to cool it down allowing you more effective working time.
- DO NOT keep in bucket as exothermic reaction of resin may gel form and start curing.
- Blend enough quantity that you can comfortably apply within your time-frame, not too much, not too little. We recommend up to 2Lt and a bag of Pebble Stone (one person) or double the quantity for two people mix at a time, and applying.



Storage

The products shall be stored out of direct sunlight and heat at all times. The shelf life of the product is 24 months, mix uniformly for 3 minutes prior to use.

DISCLAIMER

Material Safety Data Sheet, Technical and Environmental Data Sheet can be provided upon request.

The information provided in this document is guidance only and considering the uses of this product are beyond the seller's control, the product is sold without guarantees or warranties. Warranties and guarantees shall be governed by SHIMICOAT Standard Terms of Sale. The purchaser shall make its own tests to determine the suitability for their specific application, and Shimicoat Pty Ltd is taking no responsibility for misuse of the product. The purchaser assumes all risk of use and handling of this product. This product will be happily replaced or credited back if defective. Beyond this, Shimi coat Pty Ltd is not liable for any damages caused by this product or its use.

This information and all further technical advice are based on our present knowledge and experience.

The customer is not released from the obligation to conduct careful inspection and testing of supplied goods.