

# CURING TIME PLANNER

Epoxy Flake / UVthane Coating System



**SHIMICOAT**   
SURFACE SOLUTIONS





# CURING TIME PLANNER

## Tinted Epoxy

SHIMICOAT offers three types of Tinted Epoxy over a range of curing time to suit your installation plan:

NO.	PRODUCT	CURING TIME	HANDOVER
1	Fast Cure Tinted Epoxy	2 Hours	24 Hours
2	Commercial Tinted Epoxy	5 Hours	48 Hours
3	Premium Tinted Epoxy	8 Hours	48 Hours

**Fast Cure Epoxy** is more suited to busy kitchens, restaurants, cafés and commercial floor areas where a speedy back-to-normal operation is essential.

**Commercial Epoxy** is the ideal choice where you have easy access to the floor over multiple days (48hours). The advantage of the Commercial Epoxy compared to the Premium Epoxy is its faster curing time, especially during the winter months with their lower temperatures as Premium Epoxy may take up to 20 hours to cure.

**Premium Epoxy** is the ideal coating system for residential floors with easy access and a longer time available to gradually install the Epoxy Coating System. It has been specifically engineered for DIY installers with an easy roll, longer pot-life, plenty of time to cure and a superior performance.

Manufactured by SHIMICOAT, the products are odourless, self-levelling, easy to apply and engineered to be ideally suited to Australian conditions.

FAST CURE	COMMERCIAL	PREMIUM
2 Hours Fast Cure	5 Hours Medium Cure	8 Hours Normal Cure
Same Day Floors (24 Hours)	Winter Ideal (48 Hours)	Summer Ideal (48 Hours)



## Where to Apply:

- Cafés and Restaurants
- Warehouses and Workshops
- Garages and Car Parks
- Alfresco Areas and Swimming Pools
- Commercial and Residential Areas
- Indoor and Outdoor Surfaces

## Features:

- Multipurpose Coating System
- Wide Range of Curing Times
- Ultimate Solution for busy installers
- Many Colours and Flake Designs
- Ideal for Fast-Floor Commercial Premises
- Ultra Durability Plus



For further details please contact SHIMICOAT Sales and Technical Department or refer to product bulletin or company website.

[www.shimi.com.au](http://www.shimi.com.au)

Ph: (08) 9364 7446 | [info@shimi.com.au](mailto:info@shimi.com.au) | ABN: 28 622 871 283

● MATERIALS ● CHEMICALS ● RESINS ● EQUIPMENT



# SHIMICOAT FAST CURE EPOXY

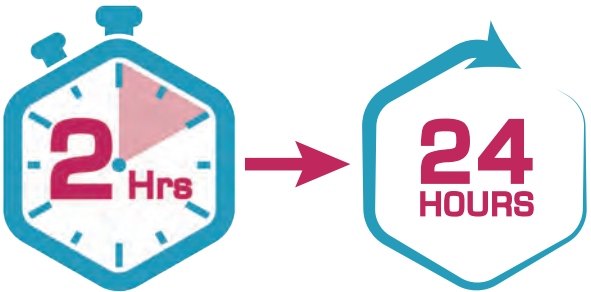
2 Hour Cure Time - 24 Hours Handover

## Installation Planner

Standard Double Garage 36m²

MORNING					AFTERNOON						EVENING / OVERNIGHT													
Preparation, Base Coat Application & Flake Broadcast					Tidy up area, clean up excess flakes, touch ups & Clear Top Coat Application						Curing Process continues overnight													
7am	8am	9am	10am	11am	12pm	1pm	2pm	3pm	4pm	5pm	6pm	7pm	8pm	9pm	10pm	11pm	12am	1am	2am	3am	4am	5am	6am	7am

STEP 1	7 - 9am	Surface Preparations, Grinding, Sanding and Removal of Surface Materials, Epoxy Mortar Patch and Repair plus Taping Walls.
STEP 2	9 - 11am	Base Coat Application, Flakes Broadcast while wet/tacky.
STEP 3	11am - 2pm	Clear Up, Tidy Up and Pack Up. Stand Down while Fast Curing (2 - 3 Hours).
STEP 4	2pm - 4pm	Scraping, Touch-Up and Recovery of Excess Flakes.
STEP 5	4pm - 6pm	UVthane Clear Topcoat Application. The Job is Now Complete.
STEP 6	6pm - 12am	Curing Process – UVthane 6 Hours Curing Time at 25°C
STEP 7	12am - 7am	Curing Process Continues and Epoxy / UVthane Coatings get harder.
HANDOVER	7am	Foot Traffic Allowed. Ready for Handover.



2 HOURS CURING EPOXY  
24 HOURS HANDOVER



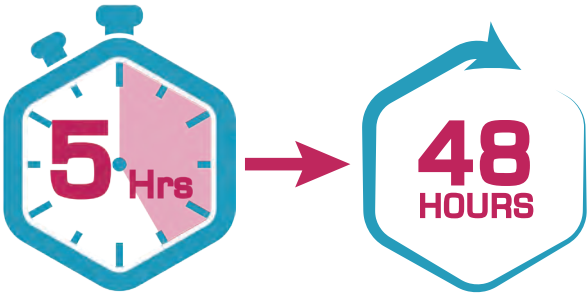


# SHIMICOAT COMMERCIAL EPOXY

5 Hour Cure Time - 48 Hours Handover

## Installation Planner - Day 1 of 2

Standard Double Garage 36m²



5 HOURS CURING EPOXY  
48 HOURS HANDOVER

MORNING					AFTERNOON						EVENING / OVERNIGHT												
Preparation, Base Coat Application & Flake Broadcast					Tidy up area, clean up excess flakes, touch ups & Clear Top Coat Application						Curing Process continues overnight												
7am	8am	9am	10am	11am	12pm	1pm	2pm	3pm	4pm	5pm	6pm	7pm	8pm	9pm	10pm	11pm	12am	1am	2am	3am	4am	5am	6am

## DAY 1 OF 2

STEP 1	7 - 9am	Surface Preparations, Grinding, Sanding and Removal of Surface Materials, Epoxy Mortar Patch and Repair plus Taping Walls.
STEP 2	9 - 11am	Base Coat Application, Flakes Broadcast while wet/tacky.
STEP 3	11am - 1pm	Clear Up, Tidy Up and Pack Up. Stand Down while Curing.
STEP 4	1pm - 7pm	Curing Process - Commercial Tinted Epoxy 5 Hours Curing Time at 25°C
STEP 5	7pm - 7am	Curing Process Continues and Epoxy / UVthane Coatings get harder.

For further details please contact SHIMICOAT Sales and Technical Department or refer to product bulletin or company website.



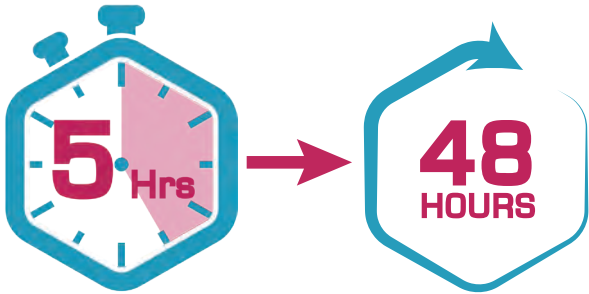


# SHIMICOAT COMMERCIAL EPOXY

5 Hour Cure Time - 48 Hours Handover

## Installation Planner - Day 2 of 2

Standard Double Garage 36m<sup>2</sup>

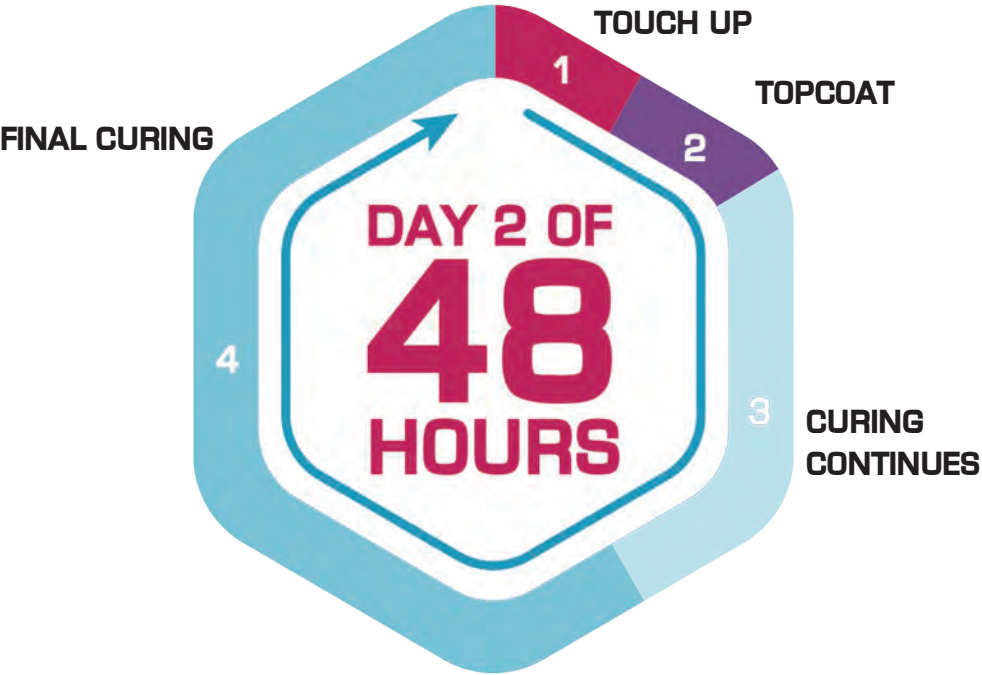


5 HOURS CURING EPOXY  
48 HOURS HANDOVER

MORNING					AFTERNOON						EVENING / OVERNIGHT												
Preparation, Base Coat Application & Flake Broadcast					Tidy up area, clean up excess flakes, touch ups & Clear Top Coat Application						Curing Process continues overnight												
7am	8am	9am	10am	11am	12pm	1pm	2pm	3pm	4pm	5pm	6pm	7pm	8pm	9pm	10pm	11pm	12am	1am	2am	3am	4am	5am	6am

## DAY 2 OF 2

STEP 6	7 - 9am	Scraping, Touch-Up and Recovery of Excess Flakes.
STEP 7	9 - 11am	UVthane Clear Topcoat Application. The Job is Now Complete.
STEP 8	11am - 5pm	Curing Process - UVthane 6 Hours Curing time at 25°C.
STEP 9	5pm - 7am	Curing Process Continues and Epoxy / UVthane Coatings get harder.
HANDOVER	7am	Foot traffic allowed. Ready for Handover.



For further details please contact SHIMICOAT Sales and Technical Department or refer to product bulletin or company website.

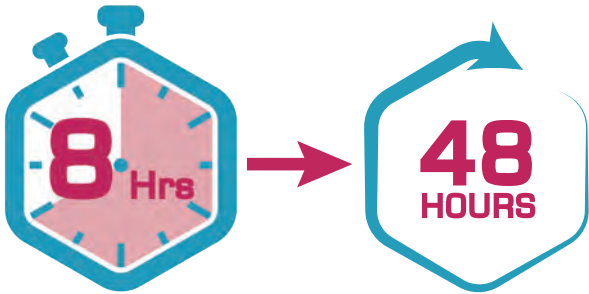


# SHIMICOAT PREMIUM EPOXY

8 Hour Cure Time - 48 Hours Handover

## Installation Planner - Day 1 of 2

Standard Double Garage 36m<sup>2</sup>

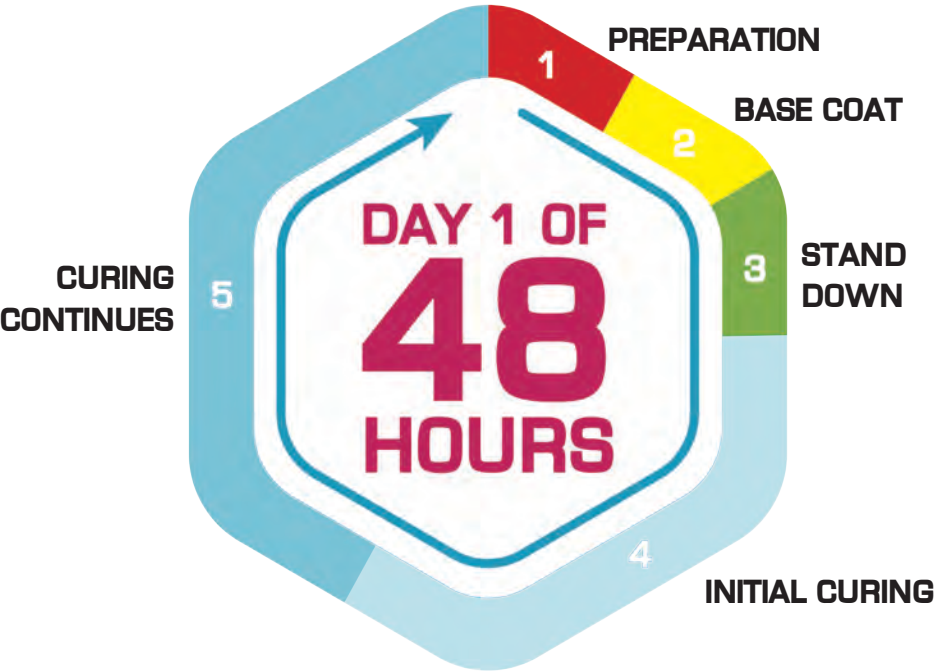


8 HOURS CURING EPOXY  
48 HOURS HANDOVER

MORNING					AFTERNOON						EVENING / OVERNIGHT												
Preparation, Base Coat Application & Flake Broadcast					Tidy up area, clean up excess flakes, touch ups & Clear Top Coat Application						Curing Process continues overnight												
7am	8am	9am	10am	11am	12pm	1pm	2pm	3pm	4pm	5pm	6pm	7pm	8pm	9pm	10pm	11pm	12am	1am	2am	3am	4am	5am	6am

## DAY 1 OF 2

STEP 1	7 - 9am	Surface Preparations, Grinding, Sanding and Removal of Surface Materials, Epoxy Mortar Patch and Repair plus Taping Walls.
STEP 2	9 - 11am	Base Coat Application, Flakes Broadcast while wet/tacky.
STEP 3	11am - 1pm	Clear Up, Tidy Up and Pack Up. Stand Down while Curing.
STEP 4	1pm - 9pm	Curing Process - Commercial Tinted Epoxy 5 Hours Curing Time at 25°C
STEP 5	9pm - 7am	Curing Process Continues and Epoxy / UVthane Coatings get harder.



For further details please contact SHIMICOAT Sales and Technical Department or refer to product bulletin or company website.



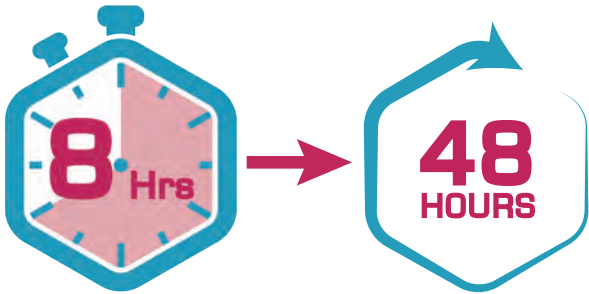


# SHIMICOAT PREMIUM EPOXY

8 Hour Cure Time - 48 Hours Handover

## Installation Planner - Day 2 of 2

Standard Double Garage 36m<sup>2</sup>

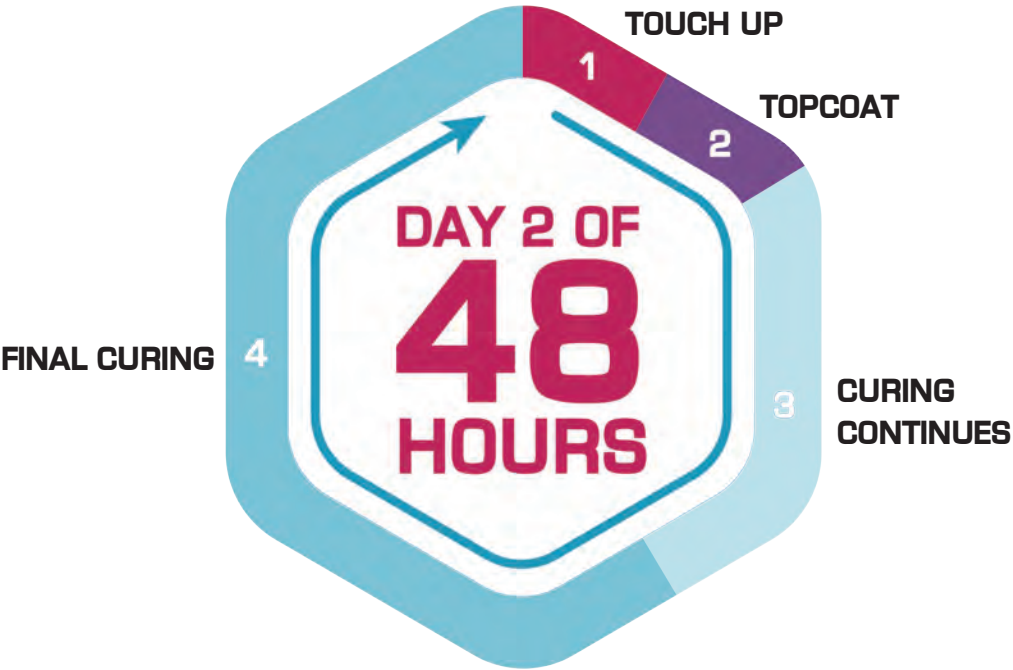


8 HOURS CURING EPOXY  
48 HOURS HANDOVER

MORNING					AFTERNOON						EVENING / OVERNIGHT												
Preparation, Base Coat Application & Flake Broadcast					Tidy up area, clean up excess flakes, touch ups & Clear Top Coat Application						Curing Process continues overnight												
7am	8am	9am	10am	11am	12pm	1pm	2pm	3pm	4pm	5pm	6pm	7pm	8pm	9pm	10pm	11pm	12am	1am	2am	3am	4am	5am	6am

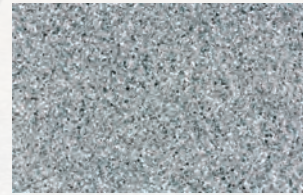
## DAY 2 OF 2

STEP 6	7 - 9am	Scraping, Touch-Up and Recovery of Excess Flakes.
STEP 7	9 - 11am	UVthane Clear Topcoat Application. The Job is Now Complete.
STEP 8	11am - 5pm	Curing Process - UVthane 6 Hours Curing time at 25°C.
STEP 9	5pm - 7am	Curing Process Continues and Epoxy / UVthane Coatings get harder.
HANDOVER	7am	Foot traffic allowed. Ready for Handover.

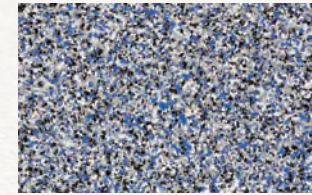


For further details please contact SHIMICOAT Sales and Technical Department or refer to product bulletin or company website.





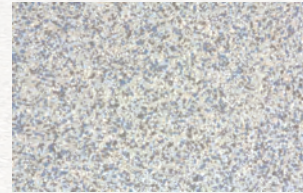
AUK



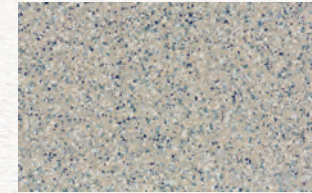
BLUE JAY



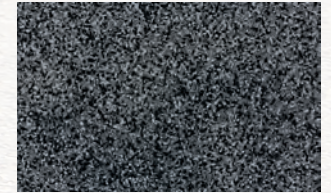
EMU



FULMAR



MALLARD



SWAN

SHIMICOAT Flakes can be incorporated into the matrix of many types of epoxy systems over a wide range of curing times. Flakes can be scattered over the surface in either a partial or full broadcast manner.

Regardless of the curing agent selection, flakes need to be broadcast over the wet epoxy as soon as it is applied to the surface ensuring optimal bonding and the ideal incorporation of flake pieces into the Epoxy matrix. When choosing Fast Cure Epoxy, the flakes need to be broadcast faster over the wet epoxy surface, typically every 5-10sqms you progressively epoxy coat the floor. However, when using the normal curing epoxy, you may be a bit more relaxed and broadcast the flakes over a longer interval of time ie. for every 10-20sqm coating broadcast the flakes or over a longer period in cooler seasons.

Regardless of the curing agent selection, always allow flakes to settle into the epoxy matrix by means of gravity, without using any other physical force. While still wet and half cured DO NOT walk over the flakes as this may result in imperfections and inconsistencies in the finish surface.



For further details please contact SHIMICOAT  
Sales and Technical Department or refer to  
product bulletin or company website.

[www.shimi.com.au](http://www.shimi.com.au)

Ph: (08) 9364 7446 | [info@shimi.com.au](mailto:info@shimi.com.au) | ABN: 28 622 871 283

● MATERIALS ● CHEMICALS ● RESINS ● EQUIPMENT