

COUNTERTOP EPOXY

MODERN . HYGIENIC

FUNCTIONAL . ECONOMICAL

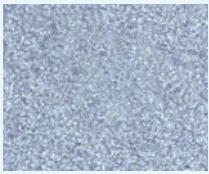


SHIMICOAT
SURFACE SOLUTIONS



SHIMICOAT COUNTERTOP EPOXY

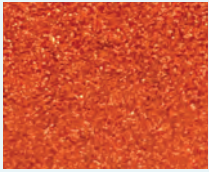
Decorative Epoxy Coating



COBALT AQUA



COFFEE CLUB



COPPER CUP



DRAGON GOLD



DUSKY CITRUS



FLAME RED



FOREST GREEN



GRASS GREEN



LIME GREEN



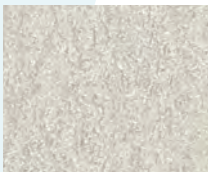
GUN METAL



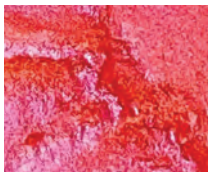
METALLICYELLOW



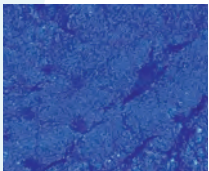
MILKY MARBLE



PEARL WHITE



PINK PERFECT



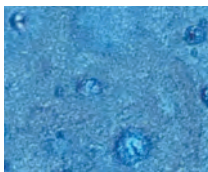
ROYAL BLUE



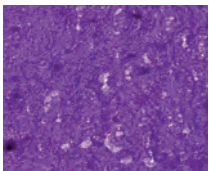
SILVER FROST



TEAL



TURQUOISE



VIBRANT PURPLE



WILD ORANGE

SHIMICOAT Countertop Epoxy is available in many finishes such as:

 **Metallic / Marbleized Granite**
 **Sparkling Glitters**
 **Flake Broadcast**

Our most popular Countertop Epoxy is a decorative metallic marble in appearance surface coating system for Residential and Commercial applications. It is available in a Matte, Semi-Gloss or High Gloss finish.

The SHIMICOAT Countertop Epoxy is unique in style, design and pattern to enable you to create your own bespoke countertop that coordinates with the colour scheme in your home, showroom or display surfaces.

Pearlescent Metallic Pigments are used in the epoxy resin to create a marbled surface coating, and pearlescent, shimmering and iridescent accents create a gleaming finish. Metallic luster surface coatings are the latest technology where art and industrial applications merge. SHIMICOAT's Decorative Epoxy Coatings are ideally suited to commercial applications, retail environments and residential customers seeking longevity and a point of difference.

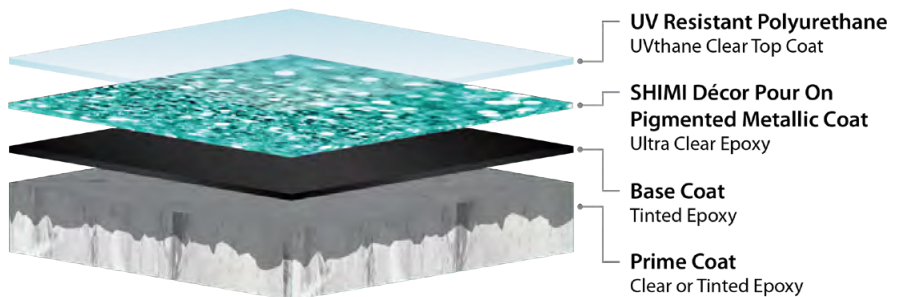
Manufactured by SHIMICOAT, the products are odourless, self-levelling, easy to apply and engineered to be ideally suitable for Australian conditions.

Where to Install:

- Countertops and Artwork Surfaces
- Display Surfaces
- Benchtops and Tables
- Bar-tops
- Metal, Wood, Stone and Laminate surfaces
- Tables & Chairs

Features:

- Modern and Contemporary Colours
- Chemical Resistant
- Seamless and Hygienic
- Heat Resistant, up to 140°C
- Functional and Easy to Clean
- Unlimited Colour and Designs
- Long Lasting
- Odourless and VOC Free



For further details please contact SHIMICOAT Sales and Technical Department or refer to product bulletin or company website.

www.shimi.com.au

Ph: (08) 9364 7446 | info@shimi.com.au | ABN: 28 622 871 283

 **MATERIALS**
 **CHEMICALS**
 **RESINS**
 **EQUIPMENT**