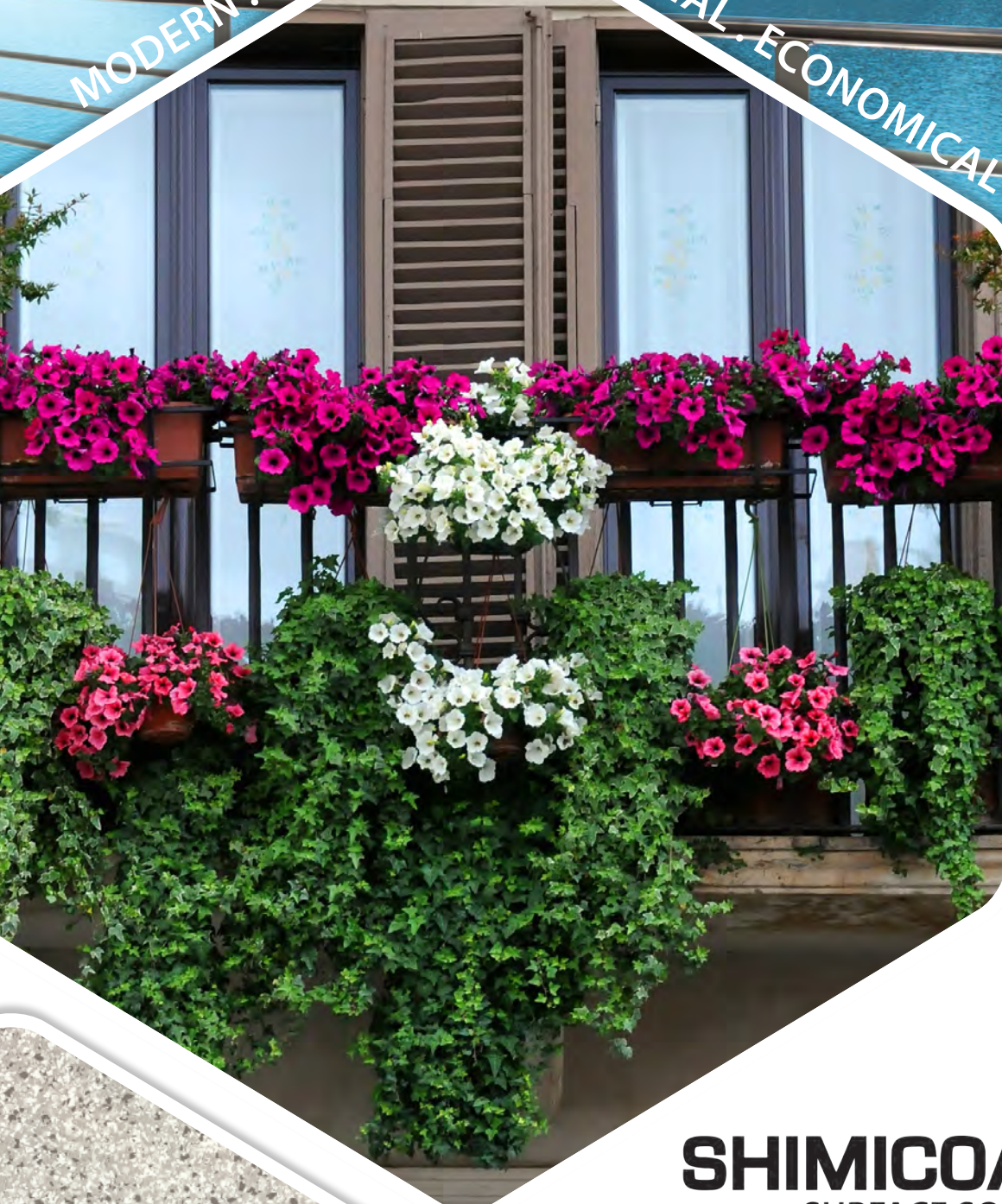


BALCONY EPOXY COATING

MODERN · HYGIENIC

FUNCTIONAL · ECONOMICAL







SHIMICOAT
SURFACE SOLUTIONS



BALCONY EPOXY COATING

Balcony Epoxy is available in many colours and the finishing systems are long lasting, decorative and functional with a slip resistant safety option. The products seal and protect the surface from various weathering conditions.

Balcony Epoxy and Coating materials can be used for Prior to Coat installations such as screeding and other surface preparation procedures. Flexi Mortar Epoxy can be used to fill the cracks, grooves and old joints. Many different surface finishes can be installed such as:

-  Flake Broadcast
-  Pour-On Metallic Epoxy
-  Slip Resistant Flat Finish
-  Plain Tinted Epoxy



Epoxy and Coating Materials can assist with waterproofing by means of creating an impervious moisture barrier. However, they should not be considered as the principal means of a waterproofing membrane.

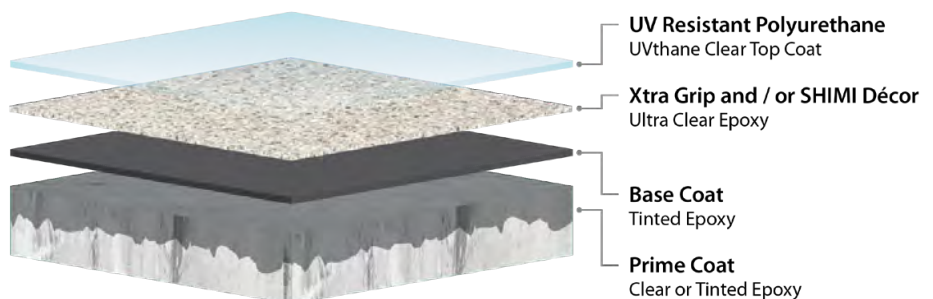
Manufactured by SHIMICOAT, the products are odourless, self-levelling, easy to apply and engineered to be ideally suited to Australian conditions.

Where to Install:

- Balcony Floors
- Alfresco and Patio Areas
- Amenities and Wash-Down Areas
- Waste Water Treatment Plants
- Bars and Entertainment Venues
- Food Processing Plants
- Industrial Warehouses
- Retail Environments
- Office Floors
- Abattoirs

Features:

- High Impact Resistant Floor
- Hard-Wearing High Gloss Finish
- Semi-Gloss / Matte Finish Options
- Resistant to Harsh Chemicals
- UV Resistant Option
- Pre-Tinted and Easy to Apply
- Slip Resistant Option
- Fast Cure Option
- Odourless and VOC Free
- Economical



BRIGHT BLUE B23

WHITE N14

NEUTRAL GREY N23

BLACK N61

DARK GREY N64

TERRACOTTA R52

DARK BROWN X65

CREAM Y34



For further details please contact SHIMICOAT Sales and Technical Department or refer to product bulletin or company website.

www.shimi.com.au

Ph: (08) 9364 7446 | info@shimi.com.au | ABN: 28 622 871 283