

RESIDENTIAL
& COMMERCIAL

INDUSTRIAL
& MARINE

ART
& CRAFT

SHIMICOAT
SURFACE SOLUTIONS



Epoxy Crack Repair Fast Cure

Complete Kit

Kit Sizes

Small

Product Description	Size	Code	Quantity
Super Ceramic Filler Materials	5Lt	SC	1
Fast Cure Epoxy 100% Solid	1.25Lt	FC	1

Medium

Product Description	Size	Code	Quantity
Super Ceramic Filler Materials	10Lt	SC	1
Ultra-Clear Epoxy 100% Solid	2.5Lt	FC	1

Large

Product Description	Size	Code	Quantity
Super Ceramic Filler Materials	20Lt	SC	1
Ultra-Clear Epoxy 100% Solid	5Lt	FC	1

Kit Includes

Commercial Grade Epoxy Crack Repair FC contains:

- Order size Super Ceramic Filler Materials
- Order size FC Clear Epoxy 100% Solid

Kit Size	Super Ceramic Filler Materials (Kg)	Fast Cure Clear Epoxy 100% Solid Kit Size (Lt)
Small (6.25Lt)	5Lt (2Kg)	1.25Lt
Medium (12.5Lt)	10Lt (4Kg)	2.5L
Large (25Lt)	20Lt (8Kg)	5L



MATERIALS



CHEMICALS



RESINS



EQUIPMENT

Description

SHIMICOAT Epoxy Crack Repair FC contains Fast Cure Clear Epoxy Resin and Super Ceramic Filler materials to make paste epoxy mortar with your ideal consistency to perfectly patch and repair the surface. The products are available in three convenient kit sizes of small, medium and large.

Ideal Kit for installers and applicators requiring super-fast and effective surface repair prior to coating applications. Epoxy Crack Repair FC Concrete Repair Kit provides a high MPa finish surface stronger than 50 MPa concrete. SHIMICOAT Epoxy Mortar is recommended where a large volume of surface preparation and concrete repair works is required. Easy to mix, Easy to apply and efficient.

Super Ceramic Filler used in Epoxy Crack Repair FC assists in improving rheology, reduces sag/shrinkage, improves impact resistance and is chemically inert and non-absorbent. Modern, hygienic, functional and economical surface.

Kit Size	Super Ceramic Filler Materials	Resin Kit Size (Lt)	Resin Mix Ratio
Small (6.25Lt)	5Lt (2Kg)	1.25Lt	4A:1B (1Lt A + 0.25Lt B)
Medium (12.5Lt)	10Lt (4Kg)	2.5L	4A:1B (2Lt A + 0.5Lt B)
Large (25Lt)	20Lt (8Kg)	5L	4A:1B (4Lt A + 1Lt B)

Features

Epoxy Crack Repair FC Kit comprises of Fast Cure Clear Resin 100% Solid and reinforcing body structure of Super Ceramic Filler materials to provide the hardest surface in Civil Construction industries. Selected Features of SHIMICOAT Clear Epoxy Repair FC:

- Super-Fast Cure time
- Ideal for commercial application (Rapid Back to Normal)
- Contains highly advanced Super Ceramic Filler Materials
- Maximum reinforcement Epoxy structure
- Light and Easy to mix, use and apply
- High compressive strength
- Thermal stability
- Longevity over 20 years
- Ideal Rheology for all applications
- No Sagging as it is light
- Improved Fire Rating performance
- Modern, Hygiene, Functional and Economical.
- Highly resistant to chemical attack and pedestrian or vehicular traffic.
- DIY Friendly, easy to apply and curable over a wide range of temperature.

Usage

Super Ceramic shall be added to Premixed (Part A and Part B) Fast Cure Clear Epoxy, twice as much as resin quantity (200% by volume). Extra Super Ceramic can be added for special applications.

Applications

Use Trawl, Scraper or Spatula to smear over the cracked surface and fill the gap. Remove excessive and wipe off using scraper. Pour over the surface and squeegee to spread out and level.

Dry Time at 25°C

Pot Life:	15 minutes at 25°C
Tack Free:	1 hour
Thin Film Set:	1.5 Hours (Min, depending on temperature and humidity)
Deep Cast Set:	2 Hours (depending on temperature and humidity)
Dry Cured:	3 hours – Foot Traffic (depending on temperature and humidity)
Fully Cured:	3 days (Vehicle Traffic)
Re-Coat:	Over night

Clean Up

Thinner & Diluent (Blend of Solvents).

Preparations

Clean and dry surface. Ensure surface to be coated is free of all dirt, grease, oil, paint, curing agents and other contaminants. Removal of Oil Contamination by degreaser and alkaline cleaning pressure wash
Acid-wash to enhanced surface porosity and etch the surface. Ensure moisture free surface. Allow to completely dry, run Dry Test. Place a piece of plastic over a small area, tape the edges and leave for 1 hour. Remove plastic, if there is no moisture on either surface, concrete is sufficiently dry. Ideally, always consider surface grinding and removal of loose materials. Grinding is always advisable prior to application of all Shimicoat Epoxy products, to maximize adhesion. For further information, please refer to SHIMICOAT Instruction for “Surface Preparations”

Kit Size	Kit Contains
Small Kit	5Lt (2Kg) Super Ceramic Filler Materials with 1.25Lt of Fast Cure Clear Epoxy 100% Solid.
Medium Kit	10Lt (4Kg) Super Ceramic Filler Materials with 2.5Lt of Fast Cure Clear Epoxy 100% Solid.
Large Kit	20Lt (8Kg) Super Ceramic Filler Materials with 5Lt of Fast Cure Clear Epoxy 100% Solid.

Modern, hygienic, functional and economical surface.

Specifications

Physical & Chemical properties of Epoxy Crack Repair FC:

Pot Life @25°C	20min
Colour of Blend	Epoxy Resin is Light Amber Blended with Super Ceramic is Light Grey (Super Ceramic Colour)
Consistency and Flow	Addition of Super Ceramic Filler improves consistency to easy to apply paste
Touch Dry	1 Hour
Initial Cure Time	3 hours (depending on temperature)
Ultimate Cure Time (Days)	3 Days
MPa of Epoxy Mortar	>50
Maximum Temperature Exposure (°C)	140

Specific resistance properties of Epoxy Crack Repair FC in harsh chemicals:

Media	Reagent	Rating
Acids	Hydrochloric Acid	B
	Sulphuric Acid	C
	Acetic Acid	B
	Nitric Acid (10% max)	C
	Phosphoric Acid (25% max)	B
Alkalis	Sodium Hydroxide	B
	Ammonium Hydroxide	A
	Potassium Hydroxide	B
	Sodium Hypochlorite (Bleach)	A
Solvents	Xylene	A
	Methyl Ethyl Ketone (MEK)	C
	Diesel	A
	Ethanol	A
	Acetone	B
	Kerosene	A
	Petrol	A
	Wine & Beer	A
Code	Resistance	Description
A	Excellent	Suitable for Long term immersion
B	Good	Suitable for Short-term immersion (Max 3 days)
C	Caution	Very short contact time is OK, spill and splash
D	Danger	Not Recommended
Indicative reference only. Tested in laboratory conditions at 25°C.		

Resistance properties of Epoxy Crack Repair FC:

Heat Resistant	140°C	Alkalis	Resist Short term immersion in all alkalis.
Weather Proofing	All Epoxy Coatings may yellow with time. Weatherproof top coat may be used if required.	Salts & Brines	Resist continuous or long-term immersion in all Salts & Brine systems.
Solvents	Resistant to most hydrocarbon solvents and alcohols.	Water	Excellent resist to continuous or long term immersion in fresh & Salt Water.
Acids	Resist splash and spills in all acids.	Abrasion	Excellent when fully cured (7 Days)

Direction

Mix Twice as much as resin quantity used (200% by volume)

For example, if using Ultra Clear Epoxy, add 1.0Lt of Part B (Curing Agent) into 2.0Lt of Part A (Resin), mix for 2-3 minutes and add 6.0Lt (2.4Kg) of Super Ceramic Filler. If necessary, add EpoSeal Diluent at a rate of up to 5% to smoothen the paste.

Mixing

Mix thoroughly for a minimum 3 minutes manual or with mechanical mixer at low speed (750rpm Max) to ensure uniformity of the product.

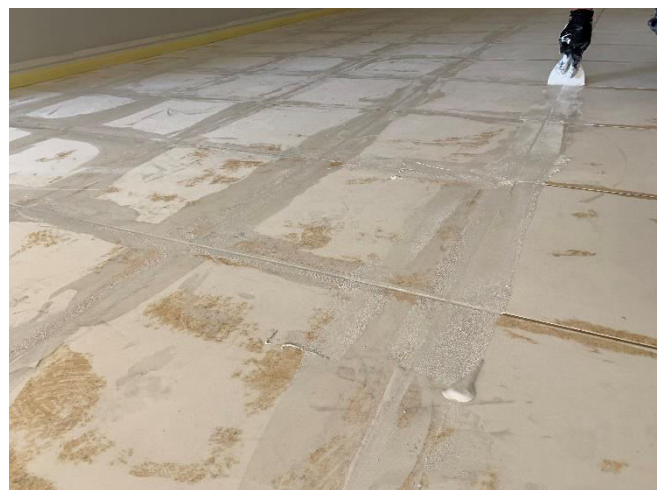
Helpful Hints:

- Ensure surface to be coated is dry. Moisture can cause blooming and delamination.
- Pot life is approximately 45 minutes, work within 30min to ensure ideal rheological properties and easy flow application.
- Use steady long strokes and avoid overworking the roller or pushing your roller too quickly as this may trap air bubbles in the coating.
- Do not apply, if the rain is expected within 24 hours of application.
- Not recommended for use below 10°C or above 35°C.
- New concrete should be allowed to cure fully (at least 20days) before application.
- Keep the containers (Pail or Cans) sealed when not in use.
- Avoid application on hot surfaces

Drying Times

SHIMICOAT Epoxy Crack Repair FC dries in 3 hours. High temperatures and windy conditions may speed up the curing time. Keep foot traffic off for, at least 3 hours and vehicles for at least 3 days. Full hardness is achieved after 3 days.

Temp °C	Pot Life (min)	Surface Dry (Hours)	Initial Cure (Hours)	Recoat Time (Hours)	Fully Cured (Days)
10°C	45	12	24	24	7 Days
20°C	40	10	18	18	7 Days
30°C	35	8	16	16	7 Days



WARNING

- Heavy vehicles with hot tires may cause damage on driveway. Avoid driving over the newly repaired floors till completely cured (3 Days Min).
- Do not apply Clear Epoxy Repair FC, if the concrete has a patchy appearance as moisture may be present. Dry Test prior to application, commence application when fully dry and moisture free.

Storage

The products shall be stored out of direct sunlight and heat at all times. The shelf life of the product is 24 months, mix uniformly for 3 minutes prior to use.

DISCLAIMER

Material Safety Data Sheet, Technical and Environmental Data Sheet can be provided upon request.

The information provided in this document is guidance only and considering the uses of this product are beyond the seller's control, the product is sold without guarantees or warranties. Warranties and guarantees shall be governed by SHIMICOAT Standard Terms of Sale. The purchaser shall make its own tests to determine the suitability for their specific application, and Shimicoat Pty Ltd is taking no responsibility for misuse of the product. The purchaser assumes all risk of use and handling of this product. This product will be happily replaced or credited back if defective. Beyond this, Shimicoat Pty Ltd is not liable for any damages caused by this product or its use.

This information and all further technical advice are based on our present knowledge and experience.

The customer is not released from the obligation to conduct careful inspection and testing of supplied goods.



MATERIALS



CHEMICALS



RESINS



EQUIPMENT