

Description

SHIMICOAT RediLock Diamond Plates are ideally engineered for fast and easy removal of dense surfaces on hard-troweled concrete floors. RediLock Diamond Plates are available over a wide range of grits, bond and segment design to ensure optimal performance on many surface preparation applications.

SHIMICOAT offers a wide range of RediLock Diamond Plates to grind many surfaces such as porous ceramic glues, soft and rain-damaged concrete, terrazzo, semi-polished concrete as well as removal of vinyl glues, paint, epoxy and other concrete surface materials.

SHIMICOAT RediLock Diamond Plates are safe, instant, easy to insert and grind.

Specifications

SHIMICOAT RediLock Diamond Plates provide maximum cutting speed and optimal wear resistance in heavy grinding applications. Working speed and tool life of your RediLock Diamond Plates can be improved significantly by choosing the right diamond shoes. Three parameters to consider when choosing your RediLock Diamond Plates:

NO	Parameter	Specification
1	Grit sizes	16, 20, 30, 60, 80, 120
2	Simplified 3 bond system	Soft, Medium & Hard
3	Segment Design	Single & Double

Applications of Grit:

Grit size of RediLock Diamond Plates define how abrasive and coarse the shoes are. The lower the grit, the higher the concentration of Impregnated Diamond within the body of metal shoes, hence the more aggressive.

Grits	16	20	30	60	80	120
Concrete Surface	Super Hard	Hard	Medium	Soft-Clean Up	Polishing	Polishing
Diamond Concentration	Intense	High	Medium	Average	Low	Very Low

Applications of PCDs:

PCDs or Polycrystalline Diamonds are used ONLY, if Grit Size 16 is unable to cut and remove certain surface materials. PCDs scratch the surface aggressively and once used, a surface grinding with grit sizes of 16, 20 or 30 is required to smooth off the surface.

Surface coatings materials such as epoxy resin, glue, mastic or paint can easily be removed with PCDs. In general, these materials are sticky and typical diamond plates tend to get blunt. PCD grinding discs are ideal tools to remove them. Below are the normal coating materials.



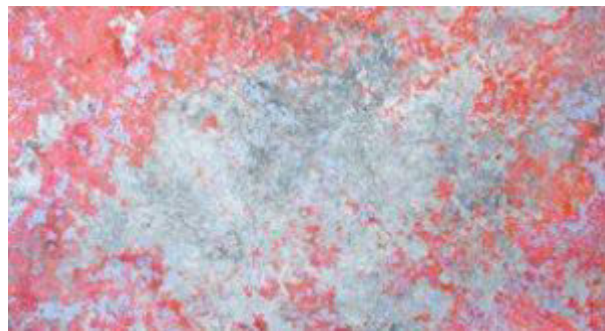
Epoxy



Glue



Mastic



Paint

Metal Bond:

SHIMICOAT offers three types of metal bonds (Soft, Medium and Hard) to ensure the pads stay opened and sharp even on the hardest top layers. Selection of only three metal bond types make your selection tools very easy, allowing quick choice of toolkit for both professional and occasional use.

SHIMICOAT RediLock Diamond Plates will get to the same level of aggregates exposure in less passes, shorter time and less labour cost when compared to many others in market.

- Soft bond: For very hard concrete.
- Medium bond: For medium to hard concrete.
- Hard bond: For medium to soft concrete.

For Hard Concrete Surface	For Medium Concrete Surface	For Soft Concrete Surface
SOFT	MEDIUM	HARD
Soft Metal Bond	Medium Metal Bond	Hard Metal Bond

With a simplified 3 bond system covering soft to hard concrete surfaces, satisfaction guarantee.

Segment Design:

SHIMICOAT offers RediLock Diamond Plates in two segment types, Single and Double.

Single: Less contact point, hence more aggressive and more pressure per square centimetre – Faster Grind. Your RediLock Diamond Plates wear out quicker than double.

Double: More contact point, hence less pressure per square centimetre – Longer Grinding Time. Your RediLock Diamond Plates last longer.

Three options of Grit Size, Bond Type and Segment Designs ensure optimal applications for quick surface grind to intense professional use in specialist applications. SHIMICOAT Diamond Grinding Plates provide maximum cutting speed and wear resistance in heavy grinding.

Fast Grinding	Longer Grinding Time
SINGLE	DOUBLE
Faster Wear	Longer Lasting

Features

SHIMICOAT metal bond range is an outstanding RediLock designed to deliver incomparable high impact productivity. An excellent choice for surface preparation through to high end polishing applications where outstanding results are required.

- Incomparable production rates
- Outstanding surface materials removal capacity
- Extended tool longevity
- Performance validated with extensive trials
- Streamlined 3 bond system “soft-Medium-hard”
- Economical

Uses

Concrete Surface Grinding

Preparation for Concrete Polishing