

RESIDENTIAL
& COMMERCIAL

INDUSTRIAL
& MARINE

ART
& CRAFT

SHIMICOAT
SURFACE SOLUTIONS



Metallic Floor Finishing System

An Installation Guide

Following is a step by step guide to install Metallic Floor Finishing System using Shimicoat Products and Materials over concrete surface floor.

Products and Materials

1. Epoxy Repair Kit
2. Basecoat Epoxy "Premium Tinted Epoxy in your choice of colour"
3. Ultra Clear Epoxy Topcoat (Indoor),
4. Diluent / Thinner
5. Metallic Pearlescent Powder or Liquid in your choice of colours (Dominant and Feature)

Tools:

1. Electric mixer or stick for mixing resin
2. Brush and Rollers
3. Extendable Handle / Pole
4. Squeegee (Notched or Flat)
5. Vacuum or blower to clean up the surface
6. Spike shoes



NOTE: Metallic Floor Systems are only recommended for indoor applications.
Notched Squeegee leaves more epoxy on surface and assist with thicker finish.

 **MATERIALS**  **CHEMICALS**  **RESINS**  **EQUIPMENT**

Ph: (08) 9364 7446 | info@shimi.com.au | ABN: 28 622 871 283 | www.shimi.com.au

Installation:

Surface Preparations:

1. Prepare the floor by concrete grinding and removal of surface materials.
2. Use Epoxy Repair kit as required to fill any cracks, holes or damages on the surface.
3. Ensure the surface is perfectly clean and free of oil and grease. If grinder is unavailable, acid wash and make sure you wash, rinse and flush with detergent to neutralize the surface and remove all acid residue.
4. Vacuum and/or blow out to remove dust from the surface.
5. Tape all around the walls and cover all surfaces that you wish NOT to be epoxy coated.

NOTE: For further information on surface preparation, please refer to our brochure, website or contact Shimicoat technical representative.

Basecoat Application:

1. Mix basecoat epoxy in small portion that you can manage to apply.
2. Premium Tinted Epoxy has a maximum of 40min Pot Lift, plan to complete your application within 30minuts allowing a few minutes for unexpected situations.
3. Ideally, we recommend mix 3Lt of Part A and 1Lt of Part B (4Lt blend) for one or two people working on a small double garage floor.
4. Apply the basecoat epoxy to corners, edges first then the main floor.
5. While still wet, broadcast flake at your desired density, Full Broadcast or Partial Broadcast.
6. Remember wet-edge allowance, always leave a wet skirting (20-30cm) to be flaked with the next area of coating. Avoid coating over Flakes.
7. Let it cure. 2-3 hours for Fast Floor, 8-12 hours for normal curing epoxy.



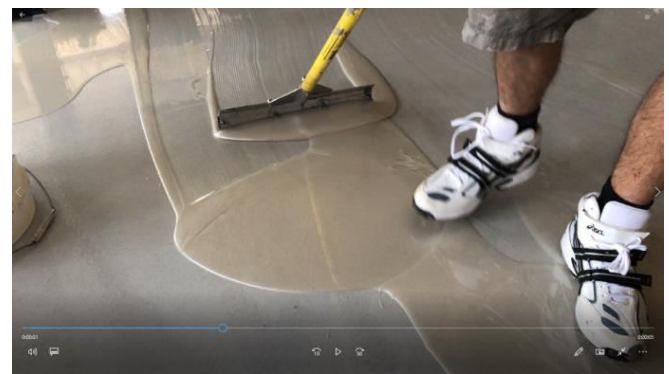
NOTE: Add Epoxy Diluent or Xylene up to 10% to thin the product, only if required for example in cold days and only for the basecoat. DO NOT add diluent to the topcoat.

Pour-On Application:

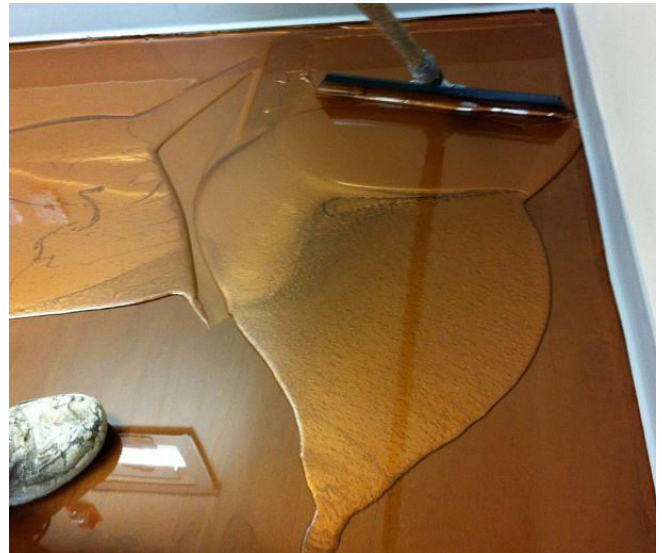
1. When the surface is cured and touch-dried, plan to apply metallic topcoat.
2. Add your metallic Pearlescent Powder or liquid (~10-30g per Lt of Resin¹) into your resin (Part A). It may be desirable the pearlescent resin to be prepared in advance to ensure pigments are dispersed well into the resin, minimizing shooting stars. Mix well using an electric mixer at low speed for min 2 minutes.
3. If you are having two or more contrast effects, take out some small quantity of resin and prepare the colours accordingly.
4. When ready, add the correct quantity of Hardener / Curing Agent into the Pearlescent treated resin (Part A).

NOTE: Now you are on the clock, DO NOT waste time, initiate application. You must be prepared for application. One person applies the corners and edges using baby-roller or a brush and another person apply to the main floor. Pour the resin on the floor, and use a notched squeegee or a similar tool plus roller to spread-out the resin over the entire floor. Calculate to apply 1L per sqm.

5. Add the contract colours and back roll over the entire floor with spike shoes ON.
6. Use your roller to go over the entire floor till you are happy with its appearance.
7. Clear the floor, wipe and clean all your tools.
8. Wear your spike shoes and take the masking tapes off the walls as it will be too hard to take off when cured.
9. When application is complete and you are happy with the appearance of the floor, let it cure for a minimum of 8 hours, ideally overnight 16 hours.



10. You can use hot gun (hot air blower) or other devices to go over the surface and burst any bubbles forming. If you are using Xylene or any flammable liquid DO NOT apply any naked flame or hot air over the surface.
11. No driving or stretching furniture over the floor for 1 week. Treat it with care, especially during the first few days.
12. It may take a week or more till the Epoxy reaches its optimal hardness and strength.



NOTE: Add Metallic Pearlescent Powder in small increments, increase dosage if using liquid pigment, to your desired effect.

For further advise, please refer to our website or contact technical team at Shimicoat.

End of Procedure.

DISCLAIMER

Material Safety Data Sheet, Technical and Environmental Data Sheet can be provided upon request.

The information provided in this document is guidance only and considering the uses of this product are beyond the seller's control, the product is sold without guarantees or warranties. Warranties and guarantees shall be governed by SHIMICOAT Standard Terms of Sale. The purchaser shall make its own tests to determine the suitability for their specific application, and Shimicoat Pty Ltd is taking no responsibility for misuse of the product. The purchaser assumes all risk of use and handling of this product. This product will be happily replaced or credited back if defective. Beyond this, Shimicoat Pty Ltd is not liable for any damages caused by this product or its use.

This information and all further technical advice are based on our present knowledge and experience.

The customer is not released from the obligation to conduct careful inspection and testing of supplied goods.