

RESIDENTIAL
& COMMERCIAL

INDUSTRIAL
& MARINE

ART
& CRAFT

SHIMICOAT
SURFACE SOLUTIONS



Line Marking Epoxy

An Application Guide

Mixing:

Mix thoroughly for a minimum 3 minutes manual or with mechanical mixer at low speed (750rpm Max).

If mixing smaller portions mix at a ratio of 3A:1B by volume. For example, to prepare 2Kg mix, add 500mL of Part B into 1.5Lt of Part A.

If using scale, you can measure by weight which is more accurate. Mix ratio by weight is 4A:1B, meaning 4Kg of Part A (Resin) into 1Kg of Curing Agent (Hardener).

- Ensure surface to be coated is dry and well prepared.
- Moisture can cause blooming and delamination.
- Pot life is approximately 45 minutes, work within 30min to ensure easy flow application.
- SHIMI COLOURS, SHIMI METALLIC or SHIMI GLITTERS should be first added to Part A (Resin). Mix slowly using drill mixer on low speed. Mix for a few minutes to ensure completely homogenized without lump. Pour the bend into your tray and apply directly on the surface using the roller.
- Silica Sand, Glass Beads, Super Ceramic or other slip resistant mediums can be added where required to enhance SlipRes properties of the finished surface.
- SHIMICOAT Line Marking epoxy is available in all Australian Standard safety colours.
- Use steady long strokes and avoid overworking the roller or pushing your roller too quickly as this may trap air bubbles in the coating.
- Do not apply if the rain is expected within 24 hours of application.
- New concrete should be allowed to cure fully (at least 28days) before application.
- Keep the pail sealed when not in use. Avoid application on hot surfaces.

Drying Times

Line Marking Epoxy LM120 cures in 8-16 hours at 25°C. High temperatures and windy conditions may speed the curing time.

Keep foot traffic off the final coat for at least 16 hours and vehicles for at least 7 days. Full hardness is achieved after 7 days.

Temp °C	Pot Life (min)	Surface Dry (Hours)	Initial Cure (Hours)	Recoat Time (Hours)	Fully Cured (Days)
10°C	45	12	24	24	7 Days
20°C	40	10	18	18	7 Days
30°C	35	8	16	16	7 Days



MATERIALS



CHEMICALS



RESINS



EQUIPMENT

Ph: (08) 9364 7446 | info@shimi.com.au | ABN: 28 622 871 283 | www.shimi.com.au

Line Marking Epoxy

An Installation Guide

Following is a step by step guide to install Line Marking Epoxy using SHIMICOAT Products and Materials over concrete, tile, wood or metal surfaces.

Products and Materials

1. Line Marking Epoxy in your choice of colour
2. Diluent / Thinner

Tools:

1. Electric mixer or stick for mixing resin
2. Brush and Rollers
3. Extendable Handle / Pole
4. Vacuum or blower to clean up the surface

Installation:

Surface Preparations:

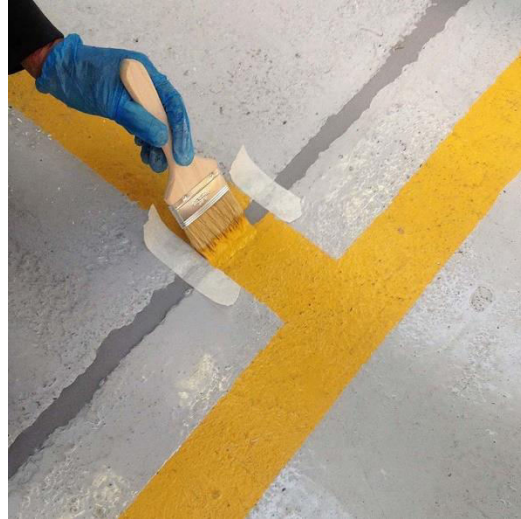
1. Use Epoxy Repair kit as required to fill any cracks, holes or damages on the surface.
2. Ensure the surface is perfectly clean and free of oil and grease. If grinder is unavailable, acid wash and make sure you wash, rinse and flush with detergent to neutralize the surface and remove all acid residue.
3. Vacuum and/or blow out to remove dust from the surface.
4. Tape all around the walls and cover all surfaces that you wish NOT to be epoxy coated.
5. Place stencils and other specialized materials for Line Marking application.



Line Marking Epoxy Application:

1. Mix Line Marking Epoxy in small portion that you can manage to apply. Line Marking Epoxy has a maximum of 40min Pot Life. Plan to finish each application within 30 minutes allowing a few minutes for unexpected situations.
2. Ideally, we recommend mix 2Lt to 4Lt blend for one or two people working on a floor that is well prepared for application.
3. Apply the Epoxy to the prepared surfaces with a roller or brush. Work the material into the surface with even, parallel strokes.
4. Re-work the previous couple of square meters periodically with light, parallel, consistent, one-way strokes.
5. Once application completed, let it cure, 6-8 hours for light traffic and full cure 7 days. Higher temperatures speed up the curing process.

NOTE: Add Epoxy Diluent or Xylene up to 10% to thin the product, only if required and especially for the first coat.
For further information on surface preparation, please refer to our brochure, website or contact Shimicoat technical representative.



For further advise, please refer to our website or contact technical team of SHIMICOAT.

WARNING

- Heavy vehicles with hot tires may cause damage on driveway. Avoid driving over the new coated floors till completely cured (7 Days). For parking the car, place a mat under each tire during the first few weeks to ensure longevity of your new floor.
- Do not apply Line Marking Epoxy LM120, if the concrete has a patchy appearance as moisture may be present. Dry Test prior to application.
- Direct sunlight and UV radiation may result in chalking, colour variations and yellowing effect over time. UV resistance topcoat shall be used.

Storage

The products shall be stored out of direct sunlight and heat at all times. The shelf life of the product is 24 months, mix uniformly for 3 minutes prior to use.

DISCLAIMER

Material Safety Data Sheet, Technical and Environmental Data Sheet can be provided upon request.

The information provided in this document is guidance only and considering the uses of this product are beyond the seller's control, the product is sold without guarantees or warranties. Warranties and guarantees shall be governed by SHIMICOAT Standard Terms of Sale. The purchaser shall make its own tests to determine the suitability for their specific application, and Shimicoat Pty Ltd is taking no responsibility for misuse of the product. The purchaser assumes all risk of use and handling of this product. This product will be happily replaced or credited back if defective. Beyond this, Shimicoat Pty Ltd is not liable for any damages caused by this product or its use.

This information and all further technical advice are based on our present knowledge and experience.

The customer is not released from the obligation to conduct careful inspection and testing of supplied goods.