

RESIDENTIAL
& COMMERCIAL

INDUSTRIAL
& MARINE

ART
& CRAFT

SHIMICOAT
SURFACE SOLUTIONS



Epoxy Mortar Coving

An Installation Guide

Following is a step by step guide to install coving with Shimicoat Products and Materials.

Products and Materials

1. Epoxy Coving Kit containing dry Silica Sand and Clear Epoxy 100% Solid.
2. EpoThin or Xylene

Required Tools:

1. Coving Device, 50mm or 75mm
2. Sponge
3. Electric Mixer
4. 20Lt Bucket
5. Spatula and Trowel
6. Gloves and other personal protective equipment PPE



Installation:

Surface Preparations:

1. Prepare the floor by concrete grinding and removal of surface materials. Ensure the surface is perfectly clean and free of oil and grease. If grinder is unavailable, acid wash and make sure you wash, rinse and flush with detergent to neutralize the surface and remove all acid residue.
2. Ensure the corners are being sharply scraped and scratched using edge grinder. All surfaces under coving need to be surface prepared prior to any application.
3. Vacuum and/or blow out to remove dust from the surface.
4. Commence preparation of Epoxy Mortar and coving application.



MATERIALS



CHEMICALS



RESINS



EQUIPMENT

Ph: (08) 9364 7446 | info@shimi.com.au | ABN: 28 622 871 283 | www.shimi.com.au

Coving Application:

1. Mix 1.5Lt of Clear Epoxy 100% solid by adding 0.5Lt of Hardener (Part B) in 1.0Lt of Epoxy Resin 2A:1B, slowly add a full bag of 20Kg of Silica Sand into the Epoxy blend while mixing with Electric Epoxy Mortar mixer.
2. Continue mixing till all 20Kg Silica Sand into 1.5Lt Epoxy blend and uniform Epoxy Mortar blend is achieved. Test the blend to ensure it is non-sagging and suitable for professional coving. Drill a hole, turn off the mixer and pull out the drill bit (see image), a hole should be formed without collapse (see image).
3. The Epoxy Mortar is ready for application.
4. Prepare small quantity of Clear Epoxy Resin (2A:1B), using a small brush wet the corner, under the epoxy mortar zone, both wall and floor.
5. Using spatula, scoop or similar tool, place epoxy mortar on the corner over the wet epoxy surface.
6. Using the Coving tool trowel epoxy mortar into the corner and spread evenly.
7. Using a sponge wetted with Xylene, wipe off and clean up the surface.
8. Pay particular attention to both ends (wall & floor) to smooth off nicely.



Mixing Epoxy Mortar



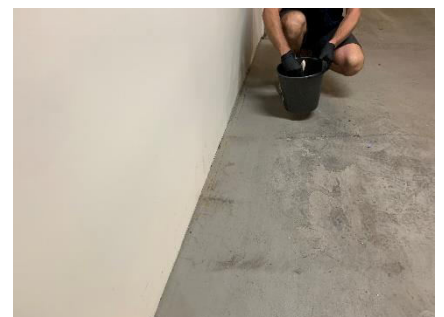
Trowelling Epoxy Mortar into the corner using Coving Device



Hole Holding Test – Non-Sag Epoxy



Soft pad and final touch ups

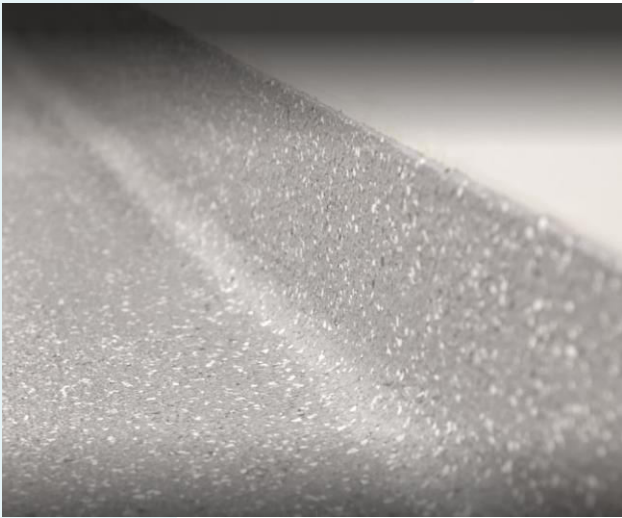


The coving application now complete. Ideally, we recommend to cover it with Epoxy or other coating materials when you apply surface coating to the entire floor.

Remember, you can use same product, same procedure for filling large gaps and cracks on floor. For small gaps and cracks, or for screeding applications, we recommend use of Super Ceramic as it is lighter and much easier to trowel and apply with better surface finish.



Epoxy Mortar for Large Gap Filling Applications



End of Procedure.

DISCLAIMER

Material Safety Data Sheet, Technical and Environmental Data Sheet can be provided upon request.

The information provided in this document is guidance only and considering the uses of this product are beyond the seller's control, the product is sold without guarantees or warranties. Warranties and guarantees shall be governed by SHIMICOAT Standard Terms of Sale. The purchaser shall make its own tests to determine the suitability for their specific application, and Shimicoat Pty Ltd is taking no responsibility for misuse of the product. The purchaser assumes all risk of use and handling of this product. This product will be happily replaced or credited back if defective. Beyond this, Shimicoat Pty Ltd is not liable for any damages caused by this product or its use.

This information and all further technical advice are based on our present knowledge and experience.

The customer is not released from the obligation to conduct careful inspection and testing of supplied goods.



MATERIALS



CHEMICALS



RESINS



EQUIPMENT