

RESIDENTIAL
& COMMERCIAL

INDUSTRIAL
& MARINE

ART
& CRAFT

SHIMICOAT
SURFACE SOLUTIONS



Epoxy Crack Repair

An Installation Guide

Following is a step-by-step guide to repair crack and fix damaged concrete surface using Shimicoat Products and Materials.

Products and Materials

- Epoxy Crack Repair Kit containing CARBOCIL and Clear Epoxy 100% Solid.
- EpoThin or Xylene (Available in your local hardware store).

Required Tools:

- Electric Mixer
- Sponge
- 20Lt Bucket
- Spatula and Trowel
- Gloves and other personal protective equipment PPE



 MATERIALS  CHEMICALS  RESINS  EQUIPMENT

Ph: (08) 9364 7446 | info@shimi.com.au | ABN: 28 622 871 283 | www.shimi.com.au

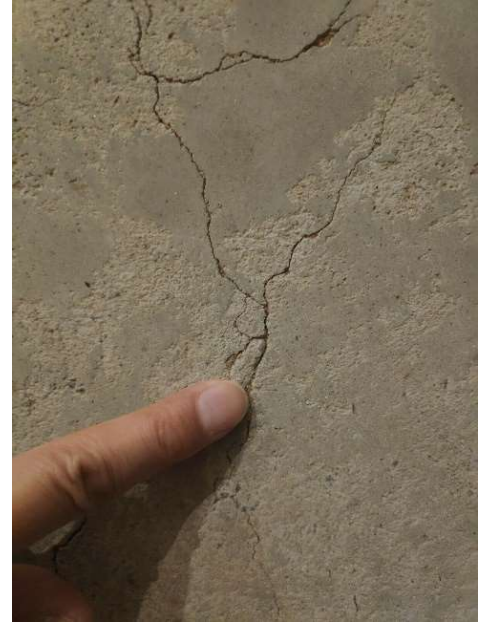
Installation:

Surface Preparations:

1. Prepare the floor by concrete grinding and removal of surface materials. Ensure the surface is perfectly clean and free of oil and grease. If grinder is unavailable, acid wash and make sure you wash, rinse and flush with detergent to neutralize the surface and remove all acid residue. Wait till fully dry prior to commencing any coating application.
2. Ensure the corners are being sharply scraped and scratched using edge grinder. All surfaces under coving need to be surface prepared prior to any application.
3. Vacuum and/or blow out to remove dust from the surface.
4. Commence preparation of Epoxy Mortar and screeding application.

Application of Epoxy Crack Repair Mortar:

1. **To prepare 1.5Lt of Clear Epoxy 100% solid:**
Adding 0.5Lt (500mL) of Hardener (Part B) into 1.0Lt of Epoxy Resin (2A:1B), mix for 2-3min. Use this blend to epoxy wet those areas needing to be patch and repaired prior to application of Ceramic paste.
2. Slowly add CARBOCIL, twice as much as quantity of Epoxy Resin (200%) by volume, in this case 3Lt of CARBOCIL into the resin and blend well. Ideal consistency is an easy flowable slurry; however, you can increase CARBOCIL to achieve mash potato or paste consistency. Or add less to get thinner filler.
3. CARBOCIL shall be added to Premixed (Part A and Part B) Ultra Clear Epoxy, twice as much as resin quantity (200% by volume). Extra CARBOCIL can be added for special applications requiring thicker paste consistency.
4. Continue mixing until uniform Epoxy Mortar blend is achieved.
5. The Epoxy Mortar is ready for application.
6. Using spatula, scoop, trowel or similar tool, place epoxy mortar on the corner over the surface.
7. Using the trowel screed and guide the epoxy mortar into the cracks and damaged surfaces, spread evenly.
8. Using a sponge wetted with Xylene, wipe off and clean up the surface.
9. Pay particular attention to ensure smooth finish before it cures.



Remember, you can use same product, same procedure for filling hairline cracks, small gaps or large surface cuts on floor. You can also use dry sand instead of CARBOCIL for certain applications as sand is generally a more economical option but the surface will never be as smooth finish as CARBOCIL Epoxy blend. You may like to choose Sand Epoxy Mortar for major holes and cracks and CARBOCIL Epoxy blend for top layer.

DISCLAIMER

Material Safety Data Sheet, Technical and Environmental Data Sheet can be provided upon request.

The information provided in this document is guidance only and considering the uses of this product are beyond the seller's control, the product is sold without guarantees or warranties. Warranties and guarantees shall be governed by SHIMICOAT Standard Terms of Sale. The purchaser shall make its own tests to determine the suitability for their specific application, and Shimicoat Pty Ltd is taking no responsibility for misuse of the product. The purchaser assumes all risk of use and handling of this product. This product will be happily replaced or credited back if defective. Beyond this, Shimicoat Pty Ltd is not liable for any damages caused by this product or its use.

This information and all further technical advice are based on our present knowledge and experience.

The customer is not released from the obligation to conduct careful inspection and testing of supplied goods.

End of Procedure.



 **MATERIALS**  **CHEMICALS**  **RESINS**  **EQUIPMENT**

Ph: (08) 9364 7446 | info@shimi.com.au | ABN: 28 622 871 283 | www.shimi.com.au